

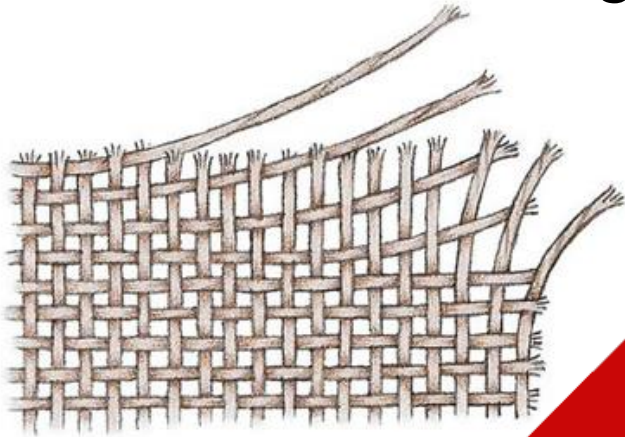


WELCOME TO THE INNOVATIVE WORLD
OF NON WOVEN CONVERTERS

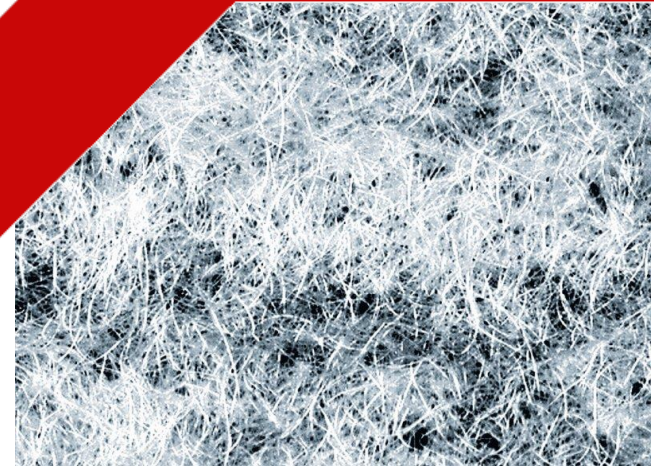
INNOVATION IS THE CORE OF OUR BUSINESS

- Technology creates new materials
- New materials create new products

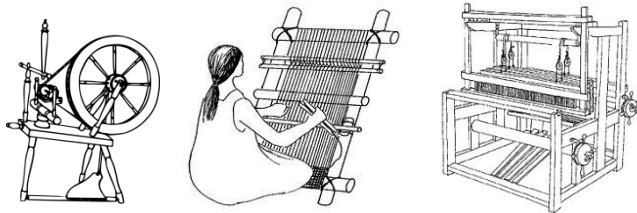
Woven Technology



The new way

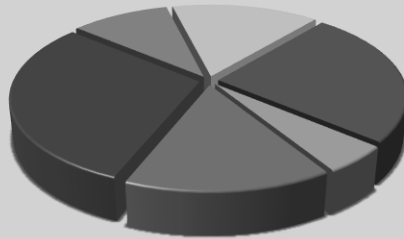


The old way



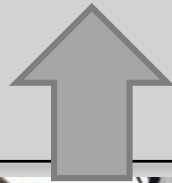
Non-woven Technology

INNOVATION IS THE CORE OF OUR BUSINESS



- Clothing
- Industrial
- Technical
- Medical
- Other

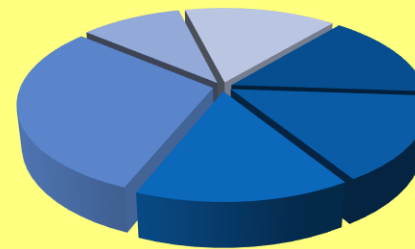
Textile Industry



Confectioners

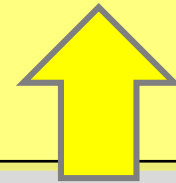


Woven materials



- Construction
- Automotive
- Agriculture
- Medical
- Other

Non-Woven Industry



Converters



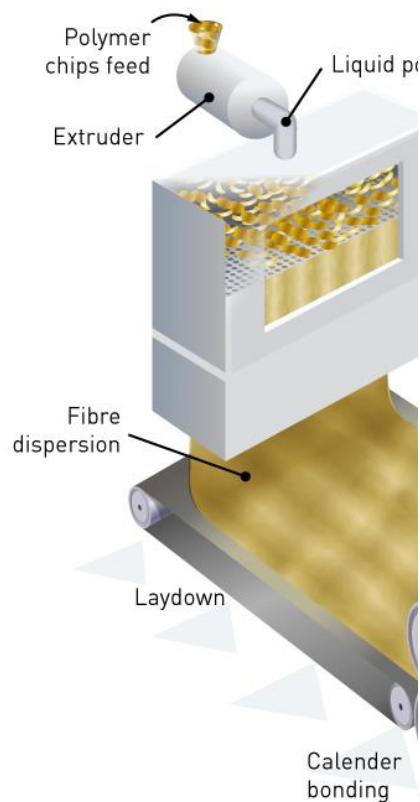
Non-woven materials



TECHNOLOGICAL INNOVATION: NEW MATERIALS

Non woven technologies:

- **Staple nonwovens**



INNOVATION IS THE CORE OF OUR BUSINESS



HANOTEX
INTERNATIONAL BV

Hanotex converts technological possibilities into
customer oriented solutions

Hanotex creates solutions that protects people,
products and plants

TECHNOLOGICAL INNOVATION: NEW SOLUTIONS

- Medical Applications
- Agricultural Applications
- Industrial Applications
-

Hanotex protects people...



TECHNOLOGICAL INNOVATION: NEW SOLUTIONS

New solutions for old problems:

- Packaging & protecting art
- Rembrandt's 'Nachtwacht'

Hanotex protects products...

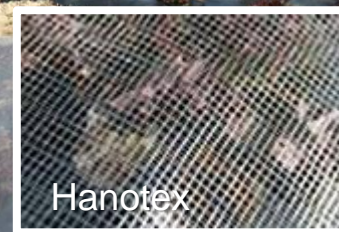


GREEN INNOVATION: RESPONSABLE SOLUTIONS

Environmental protection:

- **Crop protection**
- **Chemical replacement**

Hanotex protects plants...

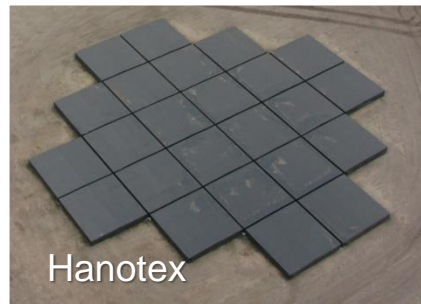


OPEN INNOVATION: NEW SOLUTIONS

Customer driven solutions:

- **Packaging & protecting science**
- **Lofar antennas for radio astronomy**

Hanotex protects products...



OPEN INNOVATION: NEW SOLUTIONS

Customer driven solutions:

- **Customer = Application knowledge**
- **Supplier = Technology knowhow**



Hanotex converts your needs into non-woven solutions together with you...

INNOVATION IN NON WOVEN FABRIC IS OUR BUSINESS

The new way



OUR WAY

The old way

INNOVATION IN NON WOVEN FABRIC IS OUR BUSINESS

Two large, stylized red geometric shapes, resembling chevrons or stylized 'Z' characters, are positioned behind the text. One shape is on the left, pointing right, and the other is on the right, pointing left, creating a central space for the text.

HOW CAN WE BE OF SERVICE?